



**WELCOME
PACKET**

TABLE OF CONTENTS

active hyperlinks for quick access

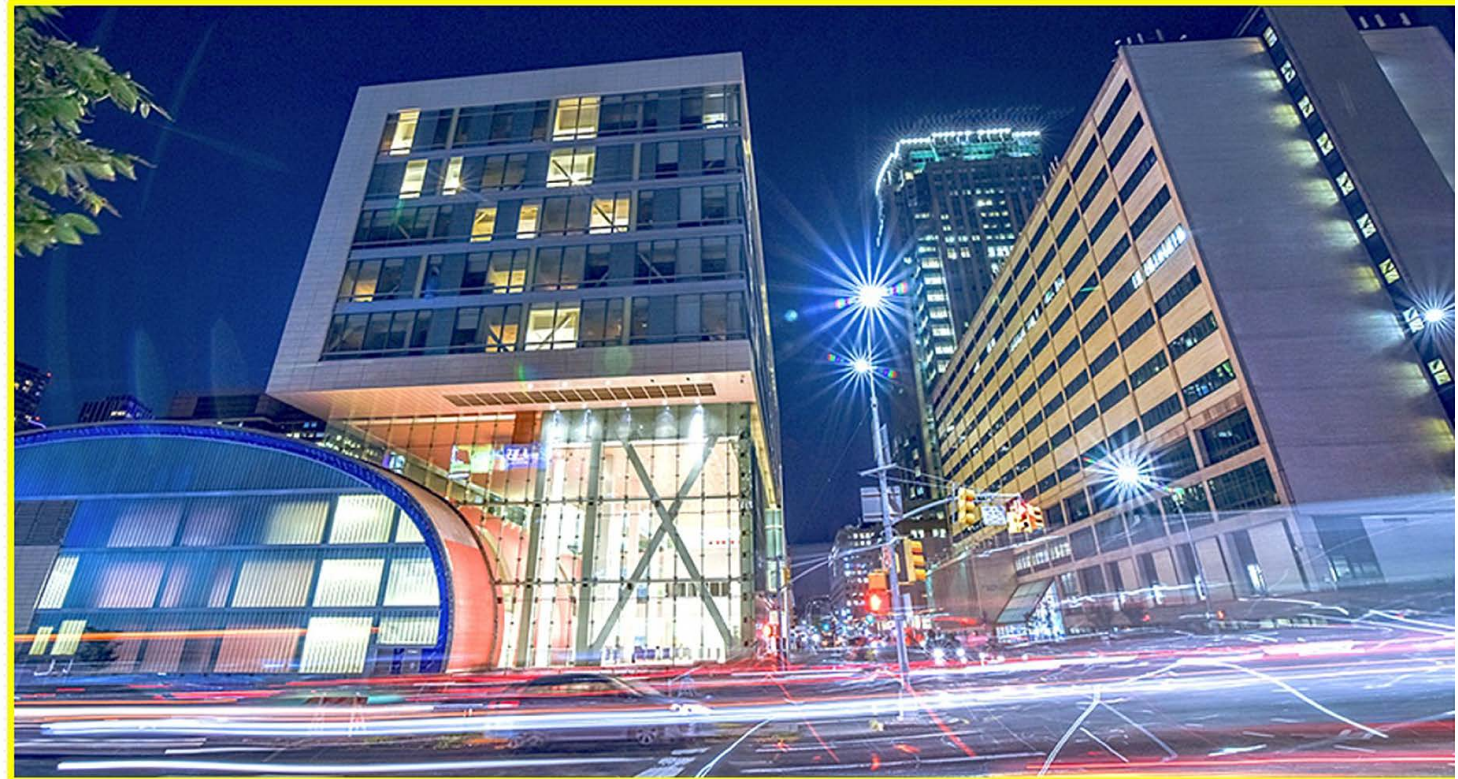
The Academic Complex	1
The Facilities	2
Facility Overview	3
Photo Gallery	4
Ground Level Floor Plan E Side	5
Ground Level Floor Plan W Side	6
Theater Seating Chart	7
Floor Plan for G Floor	8
Floor Plan for 2nd Floor	9
Fire Safety Plan - Exit Routes G Floor	10
Fire Safety Plan - Exit Routes 2nd Floor	11
The Gymnasium	12
Multi Cam Video Plot	13
Directions	14

Academic Complex

New York City

College of Technology

285 Jay Street, Brooklyn, NY 11201



FLOOR PLANS

CHARTS

THE GALLERY

SAFETY PROTOCOLS

MEASUREMENTS

LOGISTICS

Academic Complex

New York City
College of Technology

285 Jay Street, Brooklyn, NY 11201

1st

THE THEATER ①

Orchestra
382 Seats

Mezzanine
222 Seats

TILLARY LOBBY ②

Capacity
250 People

Workspaces
Space 1 36' X 29'
Space 2 15' X 6'

THE FOYER ④

Workspace
18' X 18'

THE COURTYARD & THE PATIO ⑥

Capacity 399 ⑤

2nd

THE THEATER ①

Balcony
390 Seats

J LOUNGE ③

Capacity
120

Workspace
66' x 20'

C level

THE GYM ⑦

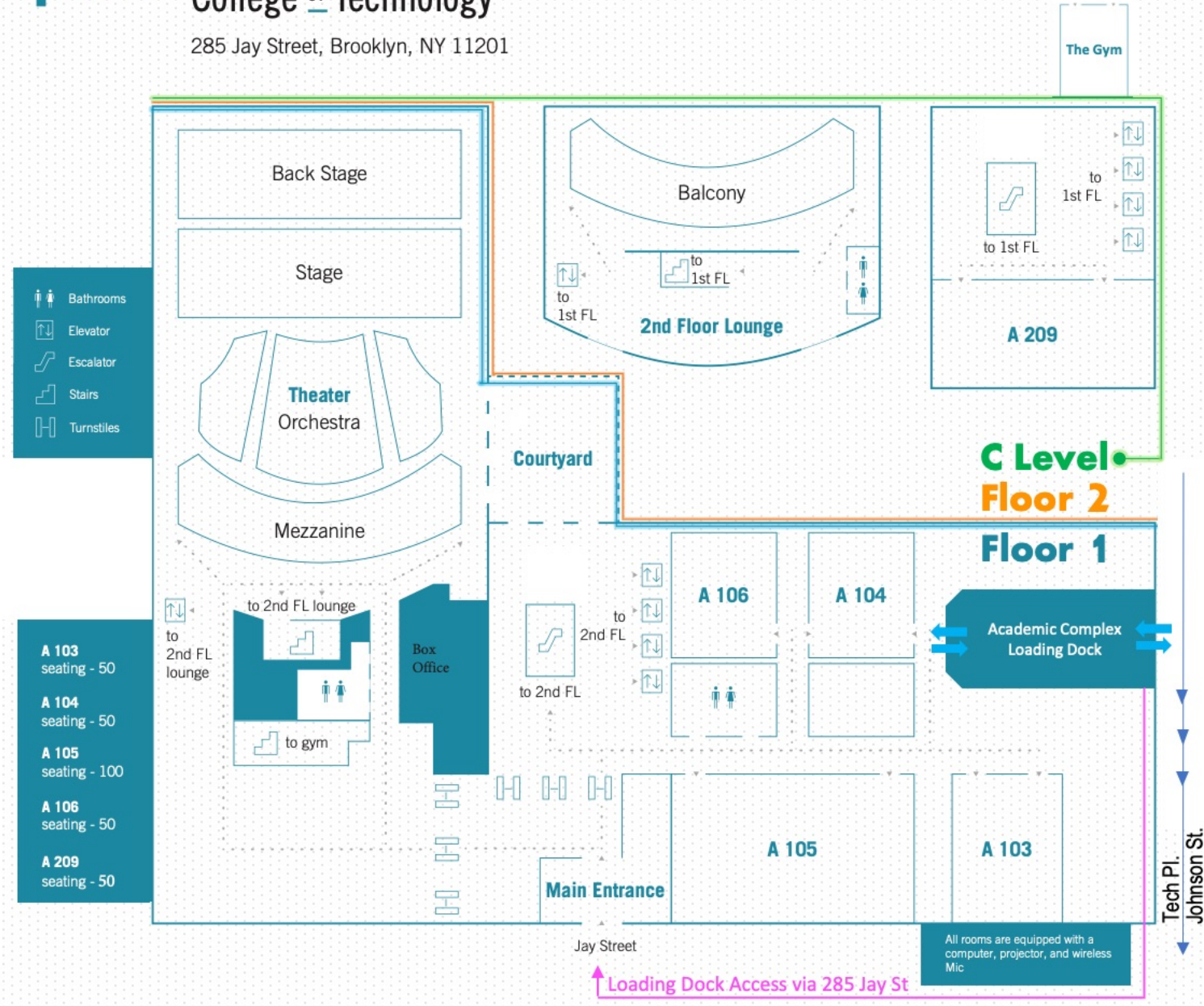
Capacity
800

Workspace
107' x 80'

BREAKOUT ROOMS
A103, A104, A105, A106, A209

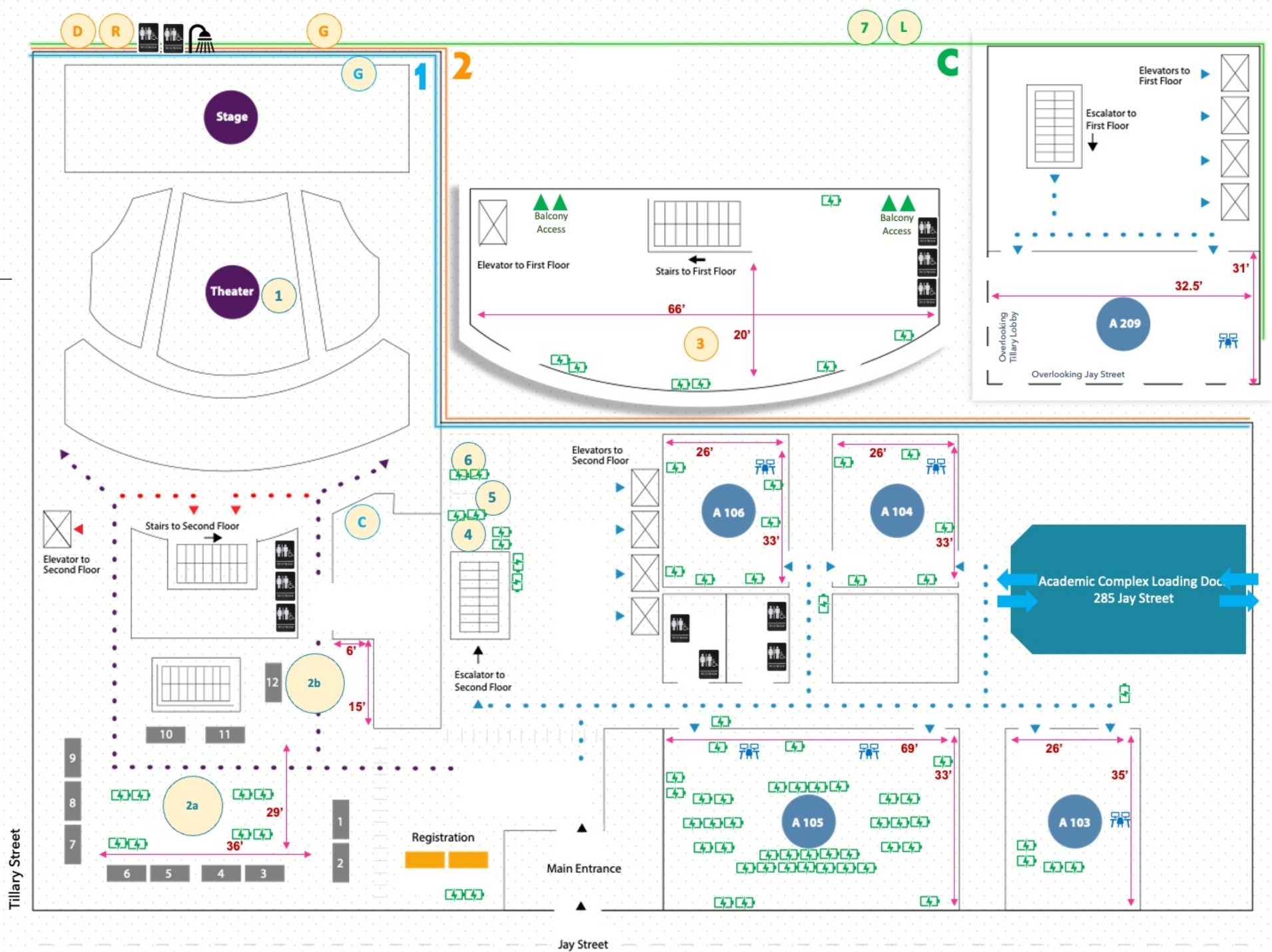
UTILITY

③ COAT CHECK Available 1	⑦ GREEN ROOM Private Room 1 Alcove 1
④ DRESSING ROOMS Available 2 Restroom Yes Shower Yes	⑧ LOCKER ROOMS Available Multi Restroom Yes Shower Yes

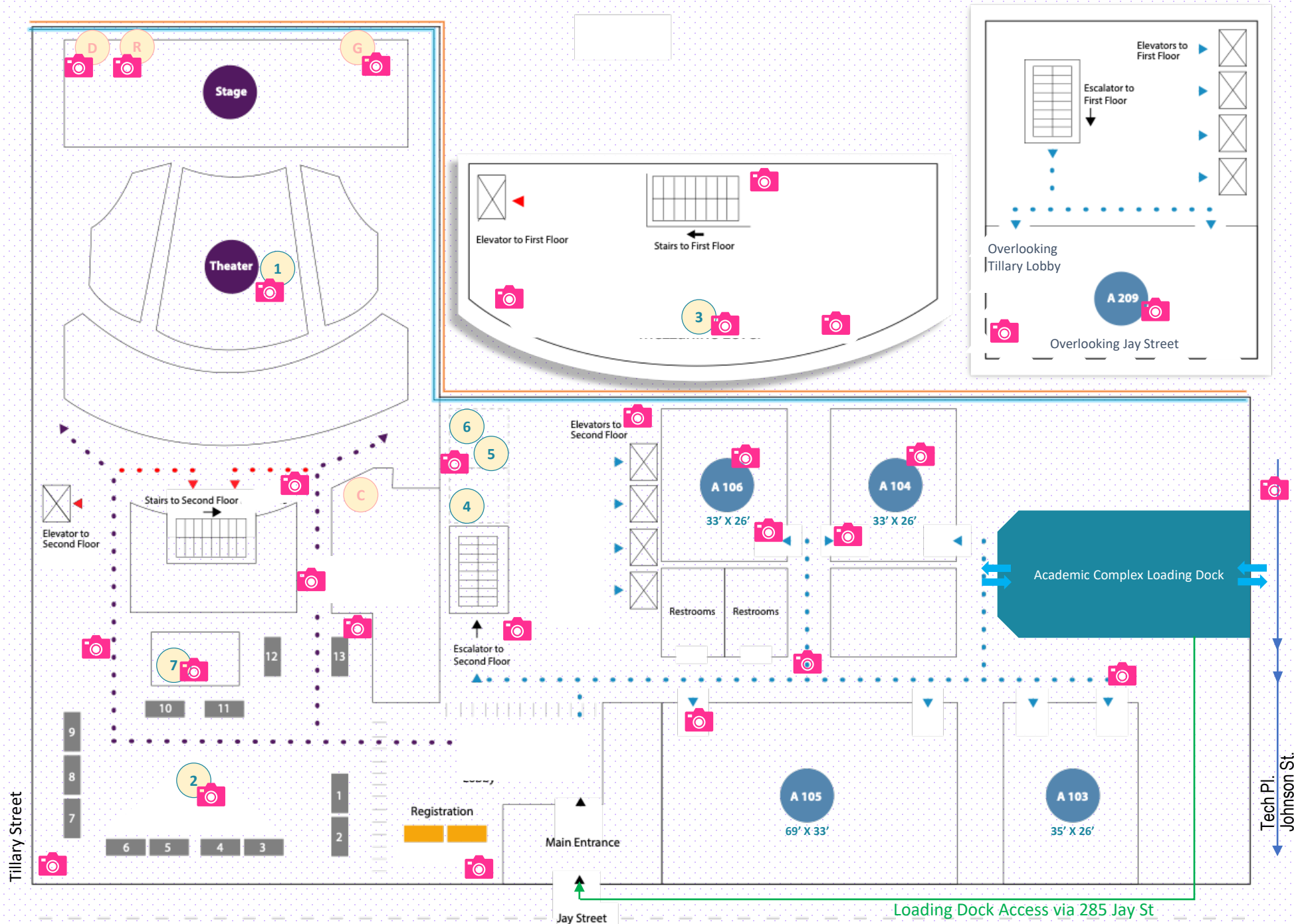


OVERVIEW

MEASUREMENTS
CROWD FLOWS
OUTLETS



THE GALLERY

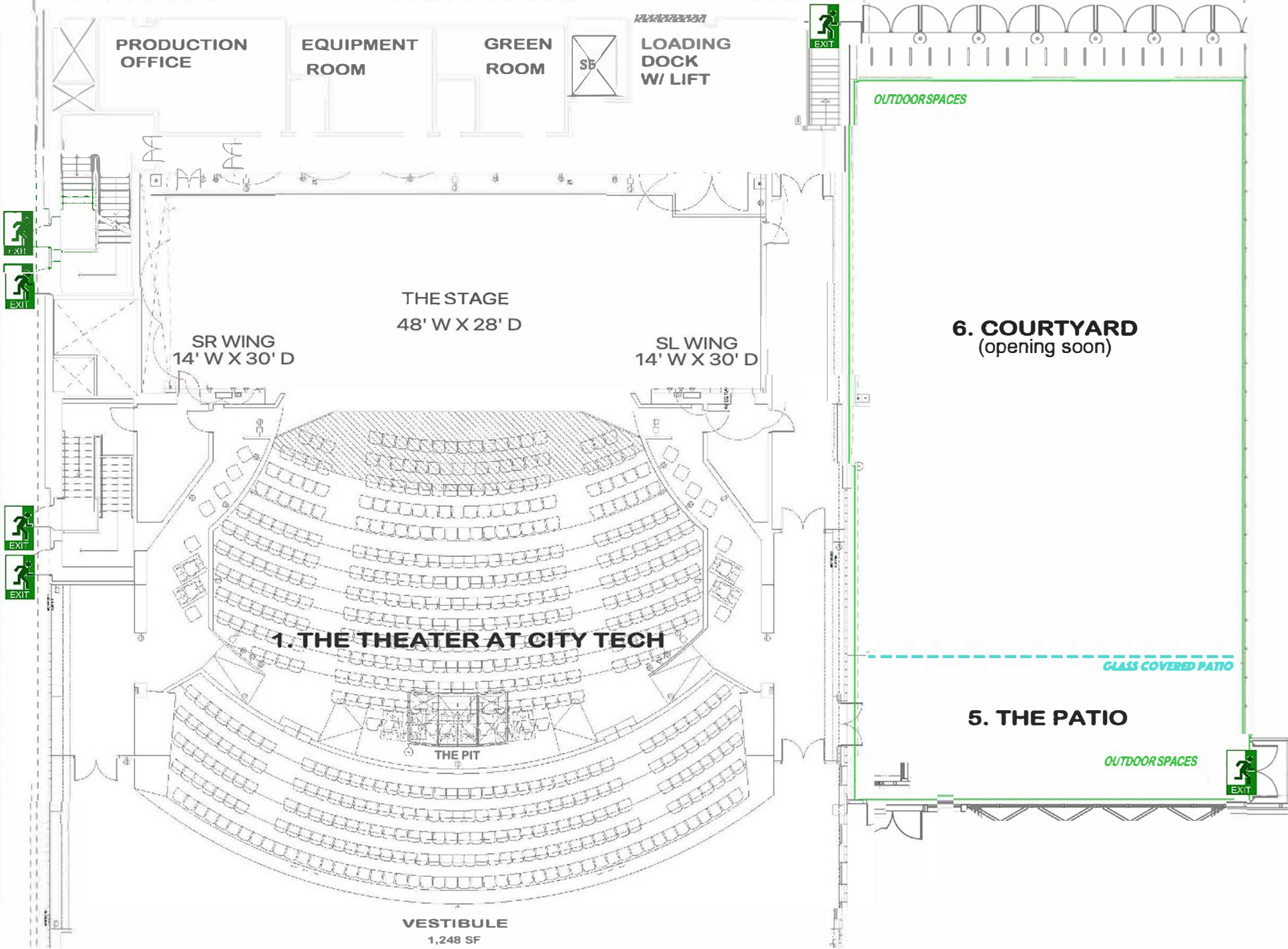


BACK END OF THEATER

**GROUND FLOOR
THEATER & STAGE
EAST SIDE**

Tillary Street

VESTIBULE ENTRY



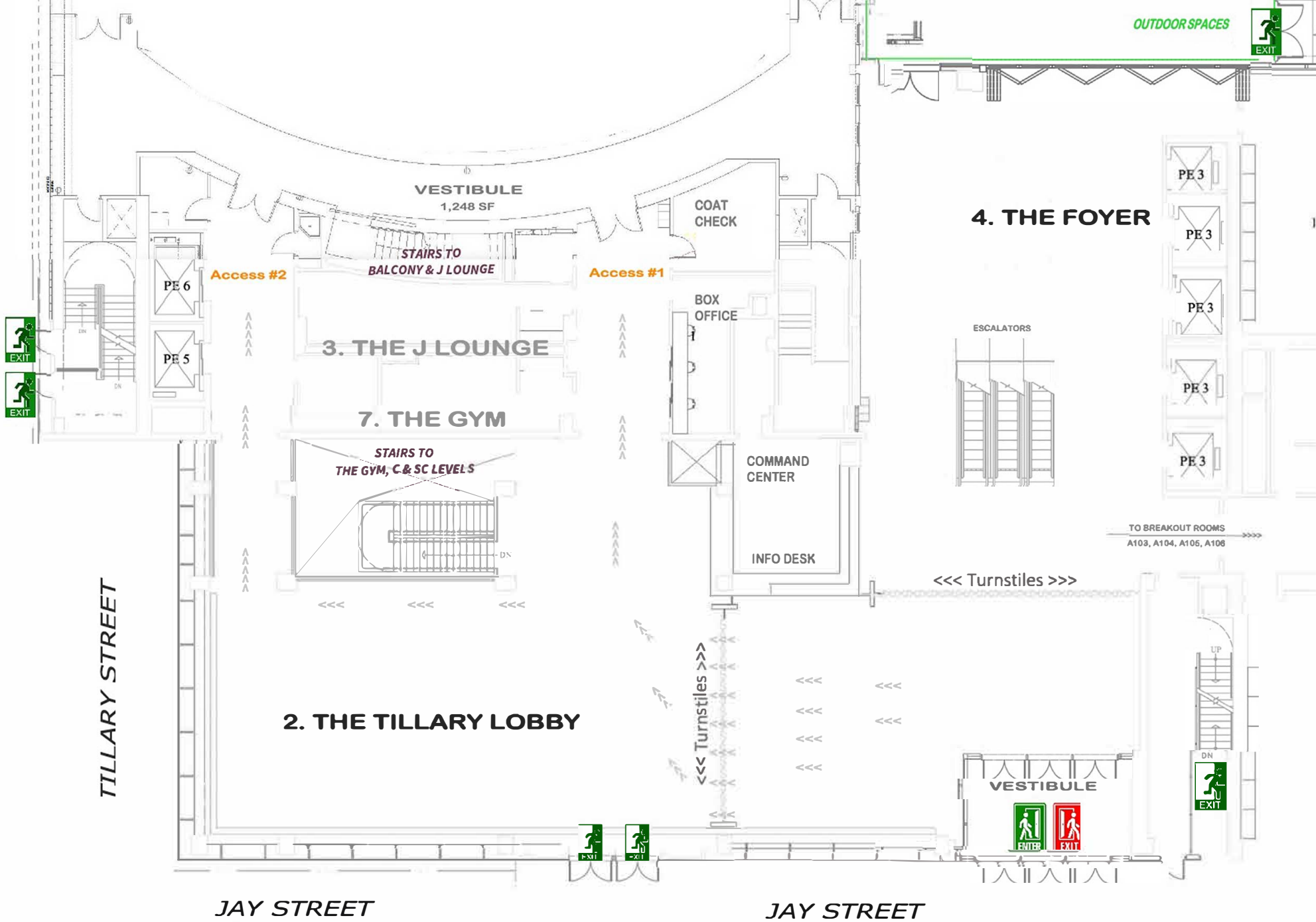
VESTIBULE ENTRY

GROUND FLOOR

TILLARY LOBBY

WEST SIDE

MAIN ENTRANCE



SEATING CHART

BALCONY

2

H	201 202 203 204 205 206 207 208 209 210 211 212 213	LIGHTING BOOTH	214 215 216 217 218 219 220 221 222 223 224 225 226	H
G	301 302 303 304 305 306 307 308 309 310 311 312 313 314 315 316 317 318 319 320 321 322 323 324 325 326 327 328 329 330 331 332 333 334 335 336 337 338 339 340 341 342 343 344 345			G
F	401 402 403 404 405 406 407 408 409 410 411 412 413 414 415 416 417 418 419 420 421 422 423 424 425 426 427 428 429 430 431 432 433 434 435 436 437 438 439 440 441 442 443 444 445 446			F
E	501 502 503 504 505 506 507 508 509 510 511 512 513 514 515 516 517 518 519 520 521 522 523 524 525 526 527 528 529 530 531 532 533 534 535 536 537 538 539 540 541 542 543 544 545			E
D	601 602 603 604 605 606 607 608 609 610 611 612 613 614 615 616 617 618 619 620 621 622 623 624 625 626 627 628 629 630 631 632 633 634 635 636 637 638 639 640 641 642 643 644 645 646			D
C	701 702 703 704 705 706 707 708 709 710 711 712 713 714 715 716 717 718 719 720 721 722 723 724 725 726 727 728 729 730 731 732 733 734 735 736 737 738 739 740 741 742 743 744 745			C
B	801 802 803 804 805 806 807 808 809 810 811 812 813 814 815 816 817 818 819 820 821 822 823 824 825 826 827 828 829 830 831 832 833 834 835 836 837 838 839 840 841 842 843 844 845 846			B
A	901 902 903 904 905 906 907 908 909 910 911 912 913 914 915 916 917 918 919 920 921 922 923 924 925 926 927 928 929 930 931 932 933 934 935 936 937 938 939 940 941 942 943 944 945			A

1

MEZZANINE

101 102 103 104 105 106 107 108 109 110 111 112 113 114 115 116 117 118 119 120 121 122 123 124 125 126 127 128 129 130 131 132 133 134 135 136 137 138 139 140 141 142 143 144 145 146 147 148 149 150				
101 102 103 104 105 106 107	S	108 109 110 111 112 113 114 115 116 117 118 119 120 121 122 123 124 125 126 127 128 129 130 131 132 133 134 135 136 137 138	S	139 140 141 142 143 144 145
101 102 103 104 105 106 107	R	108 109 110 111 112 113 114 115 116 117 118 119 120 121 122 123 124 125 126 127 128 129 130 131 132 133 134 135	R	136 137 138 139 140 141 142
101 102 103 104 105 106 107 108	Q	109 110 111 112 113 114 115 116 117 118 119 120 121 122 123 124 125 126 127 128 129 130 131 132 133 134 135	Q	136 137 138 139 140 141 142 143
101 102 103 104 105 106 107 108	P	109 110 111 112 113 114 115 116 117 118 119 120 121 122 123 124 125 126 127 128 129 130 131 132 133 134	P	135 136 137 138 139 140 141 142

ORCHESTRA

H1	101 102 103 104
H2	101 102 103 104 105 106 107
H3	101 102 103 104 105 106 107 108
H4	101 102 103 104 105 106 107 108
	101 102 103 104 105 106 107
	101 102 103 104 105 106
	101 102 103 104
	104 105

SOUND BOOTH

N	101 102 103 104	114 115 116 117 118	N
M	109 108 107 106 105 104 103 102 101 110 111 112 113 114 115 116 117 118 119 120 121 122 123 124 125	126 127 128 129 130	M
L	108 109 110 111 112 113 114 115 116 117 118 119 120 121 122 123 124 125 126 127		L
K	109 110 111 112 113 114 115 116 117 118 119 120 121 122 123 124 125 126 127		K
J	109 110 111 112 113 114 115 116 117 118 119 120 121 122 123 124 125 126		J
H	109 110 111 112 113 114 115 116 117 118 119 120 121 122 123 124 125		H
G	109 110 111 112 113 114 115 116 117 118 119 120 121 122 123 124 125 126		G
F	108 109 110 111 112 113 114 115 116 117 118 119 120 121 122 123 124		F
E	107 108 109 110 111 112 113 114 115 116 117 118 119 120 121 122		E
D	108 107 106 105 104 103 102 101 110 111 112 113 114 115 116 117 118 119 120		D
C	108 107 106 105 104 103 102 101 110 111 112 113 114 115 116 117 118 119		C
B	108 107 106 105 104 103 102 101 110 111 112 113 114 115 116 117 118		B

STAGE

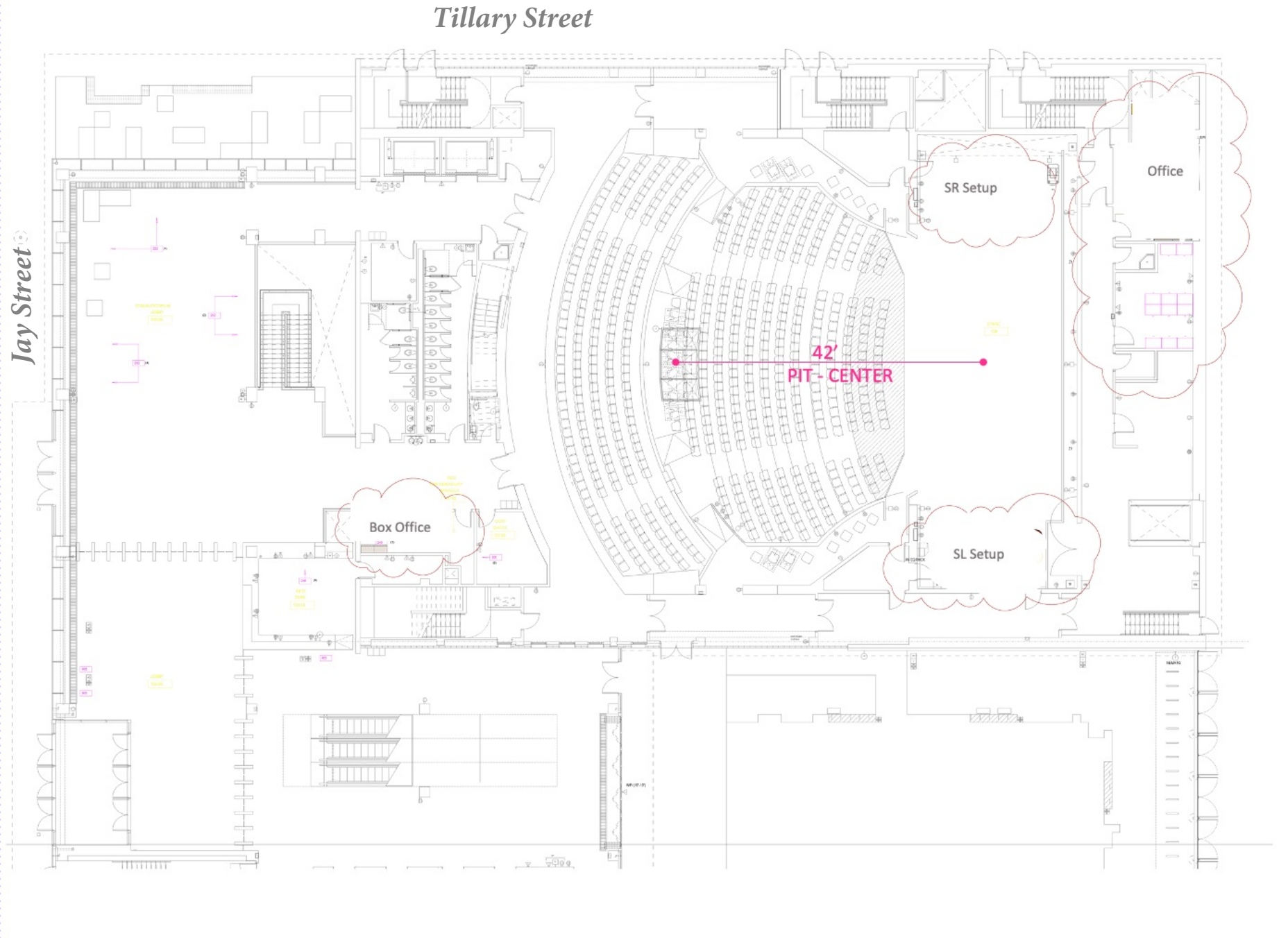
Jay

Tillary

Streets

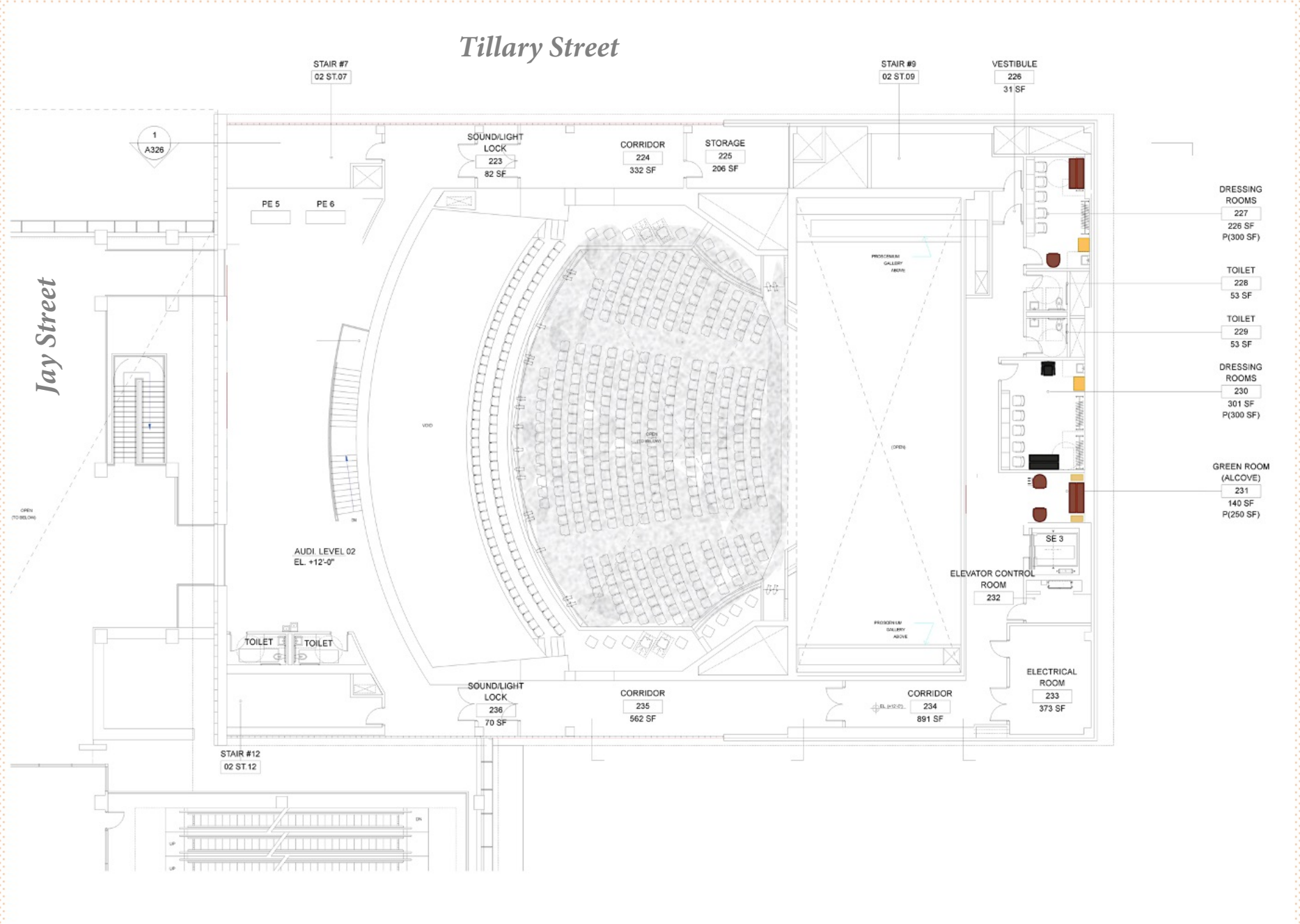
BIRD'S EYE VIEW

GROUND FLOOR / STREET LEVEL



BIRD'S EYE VIEW

2ND FLOOR



FIRE

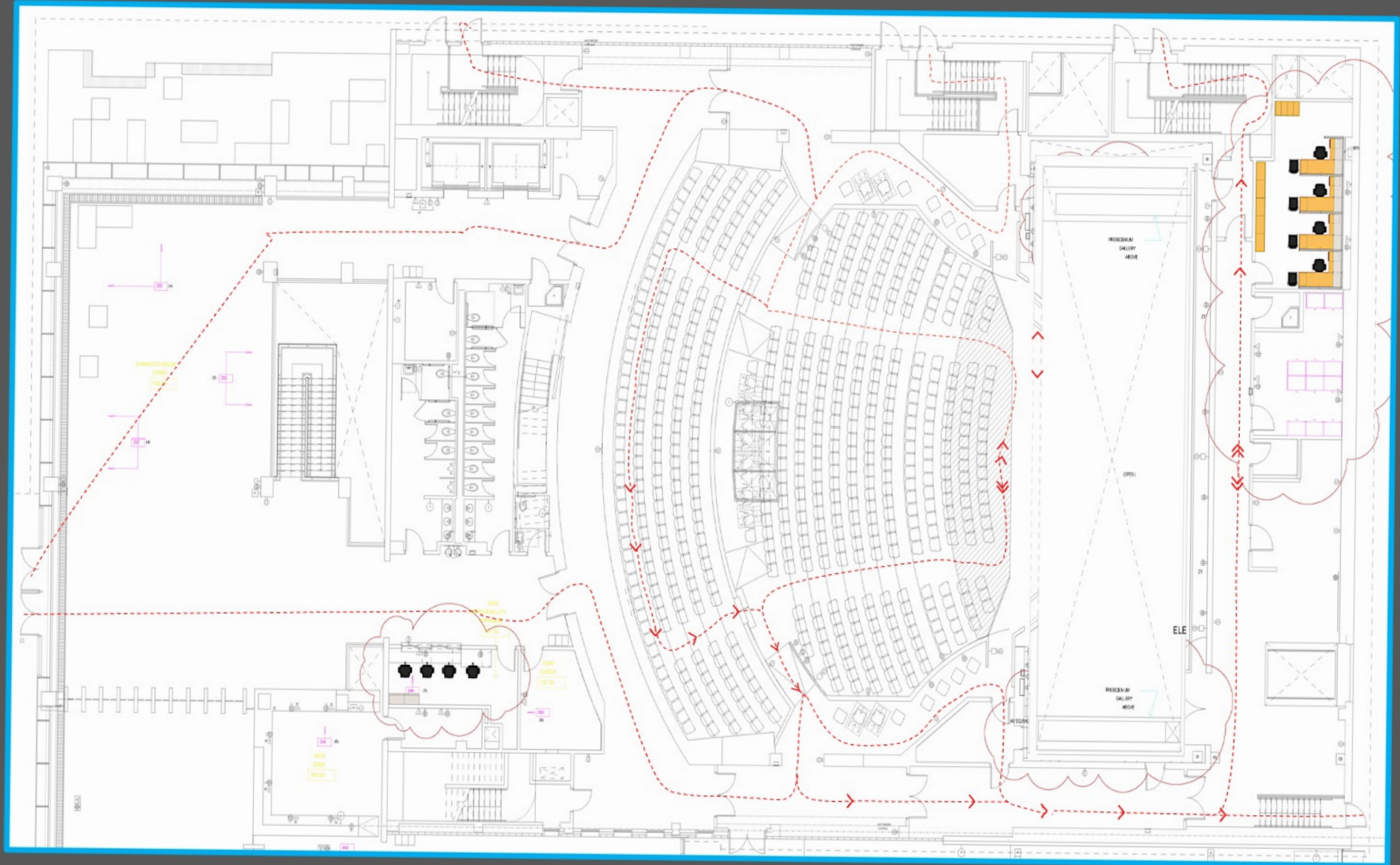
SAFETY

PLAN

1st Floor

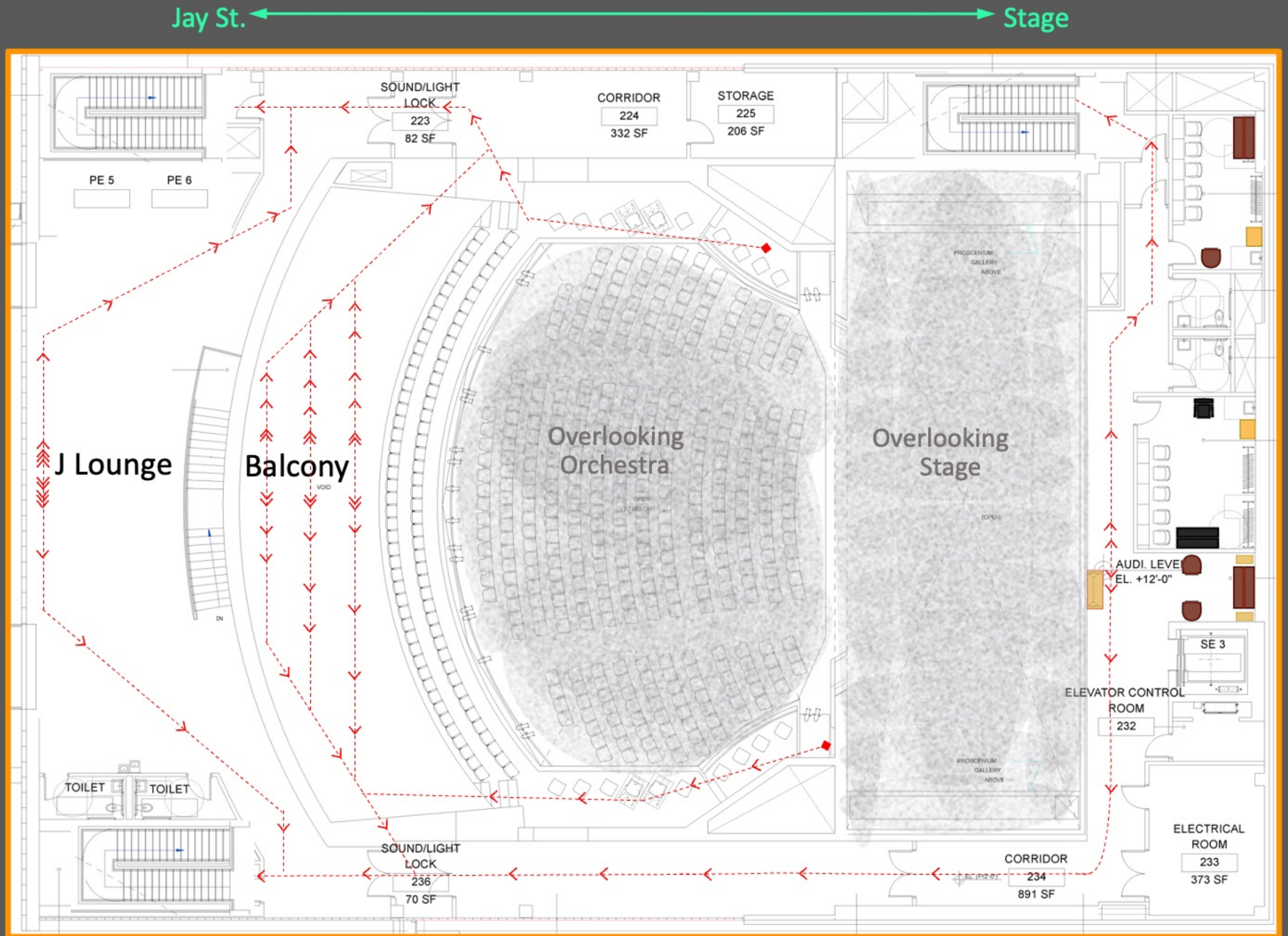
Jay St. ←

→ Stage



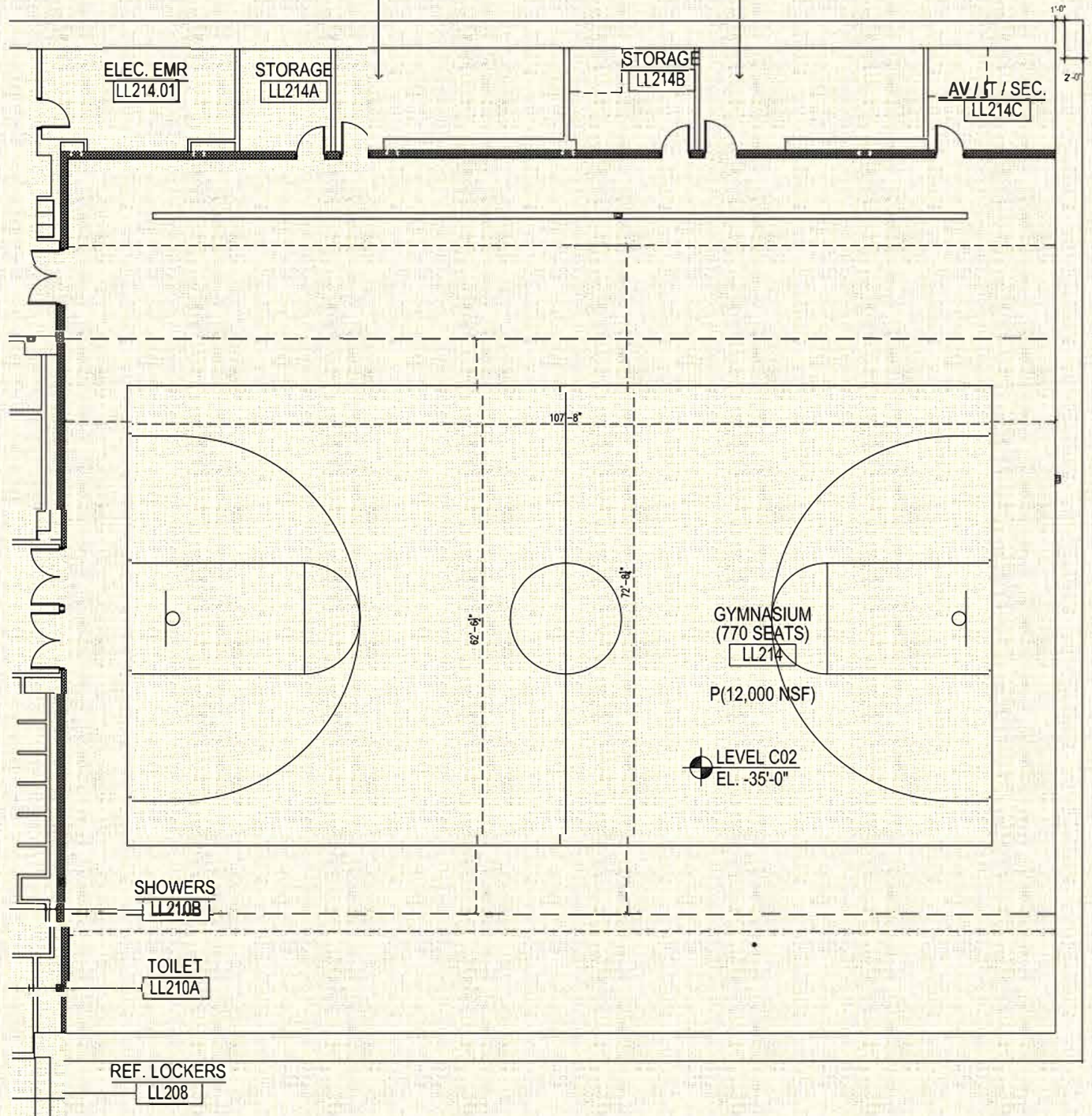
FIRE SAFETY PLAN

2nd Floor

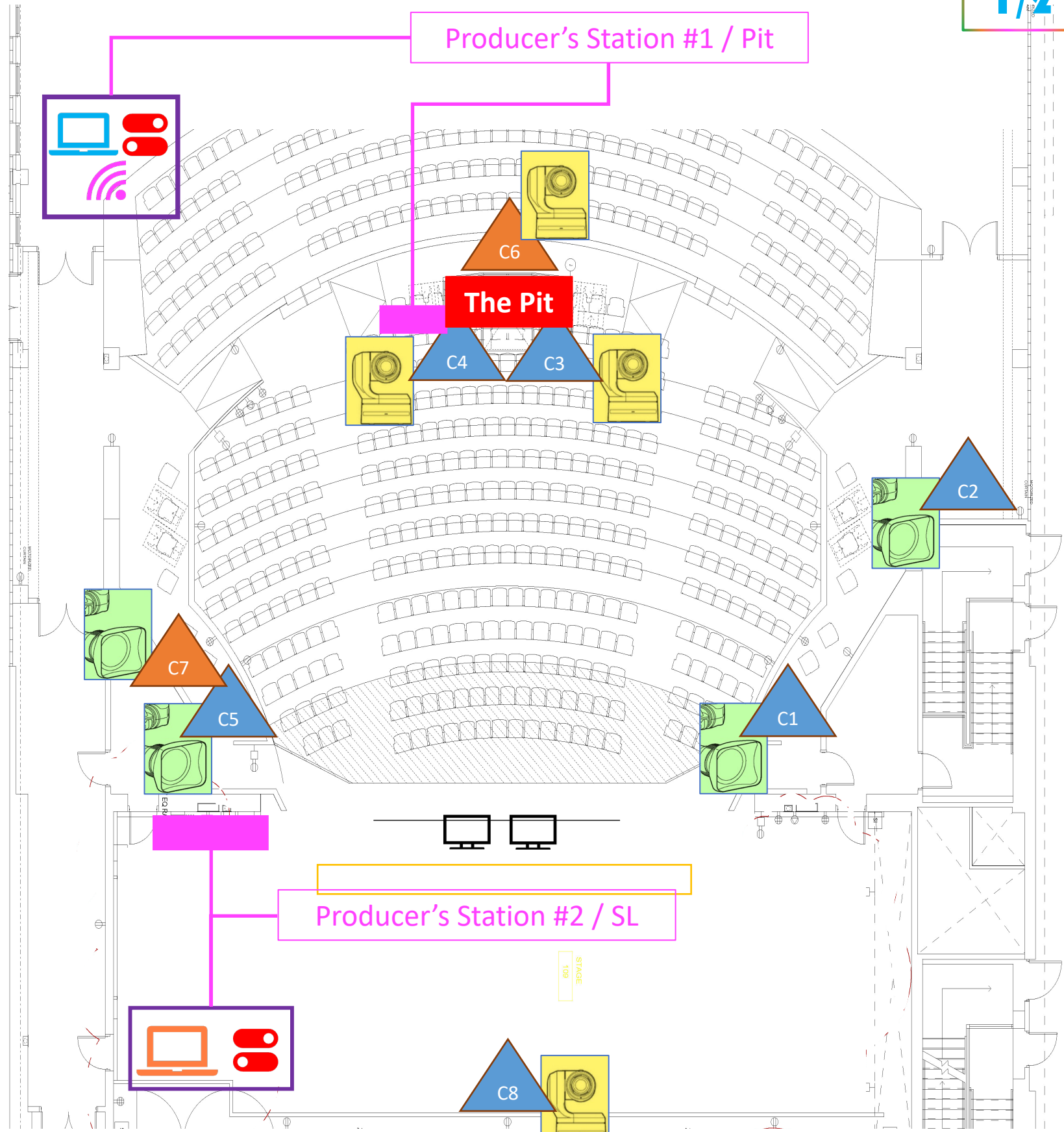
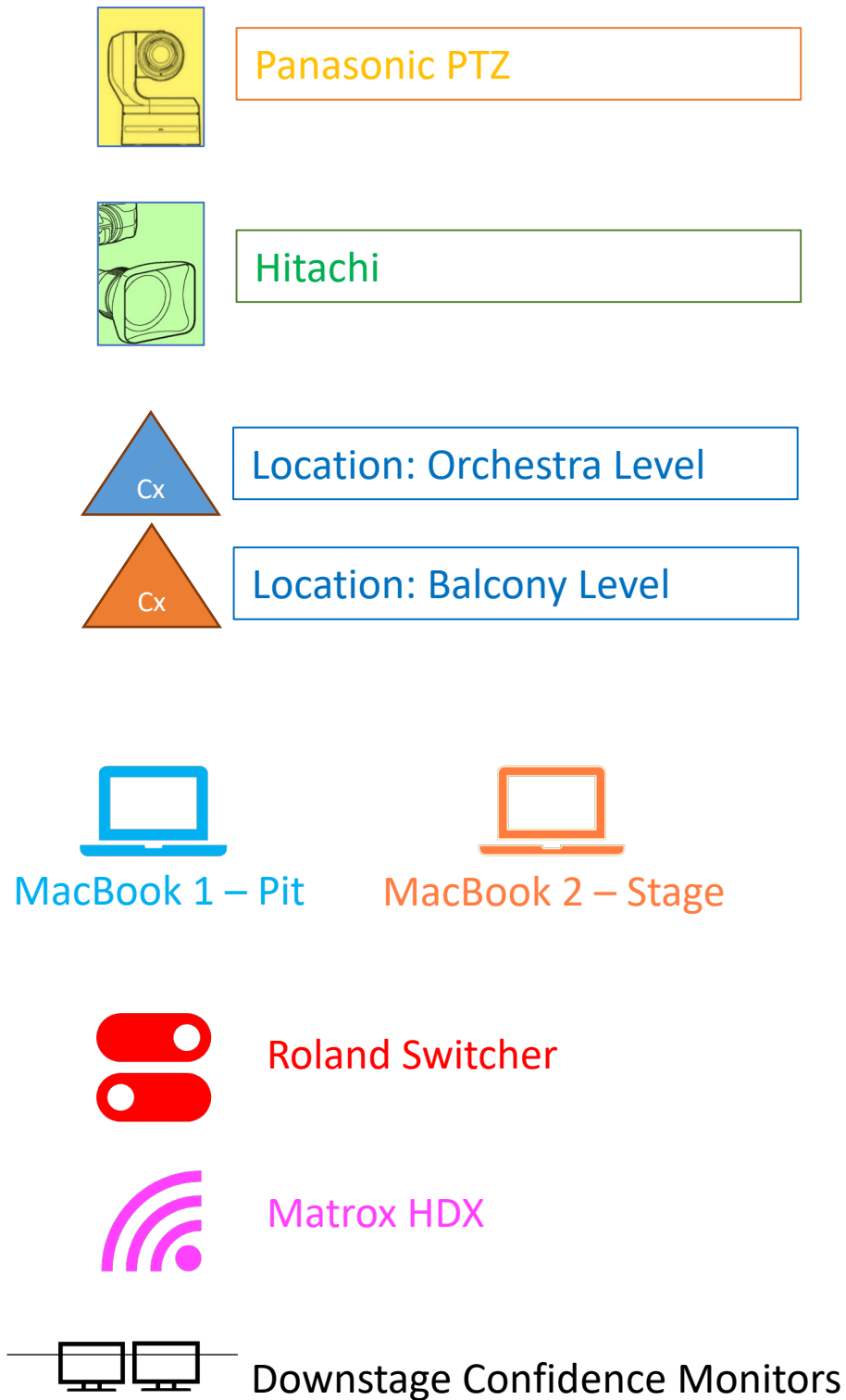


THE GYMNASIUM

CAPACITY 800



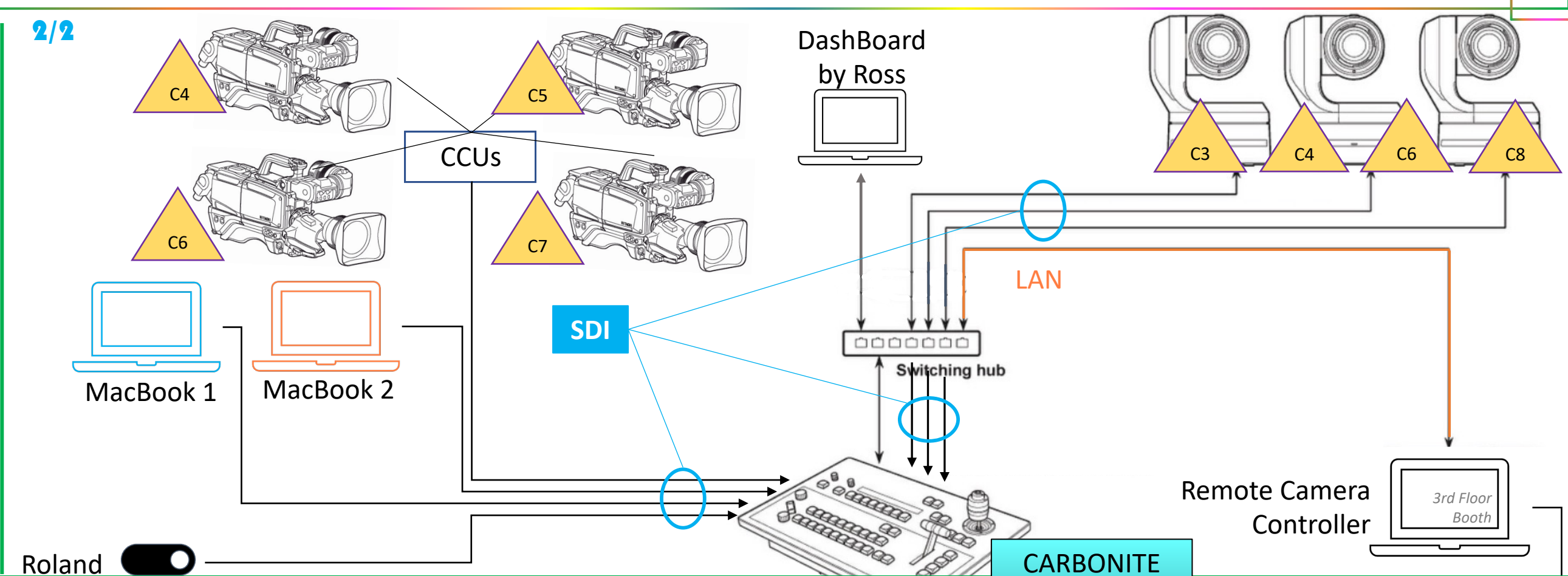
THE THEATER AT CITY TECH – VIDEO PLOT / 8 MULTI-CAM SWITCH



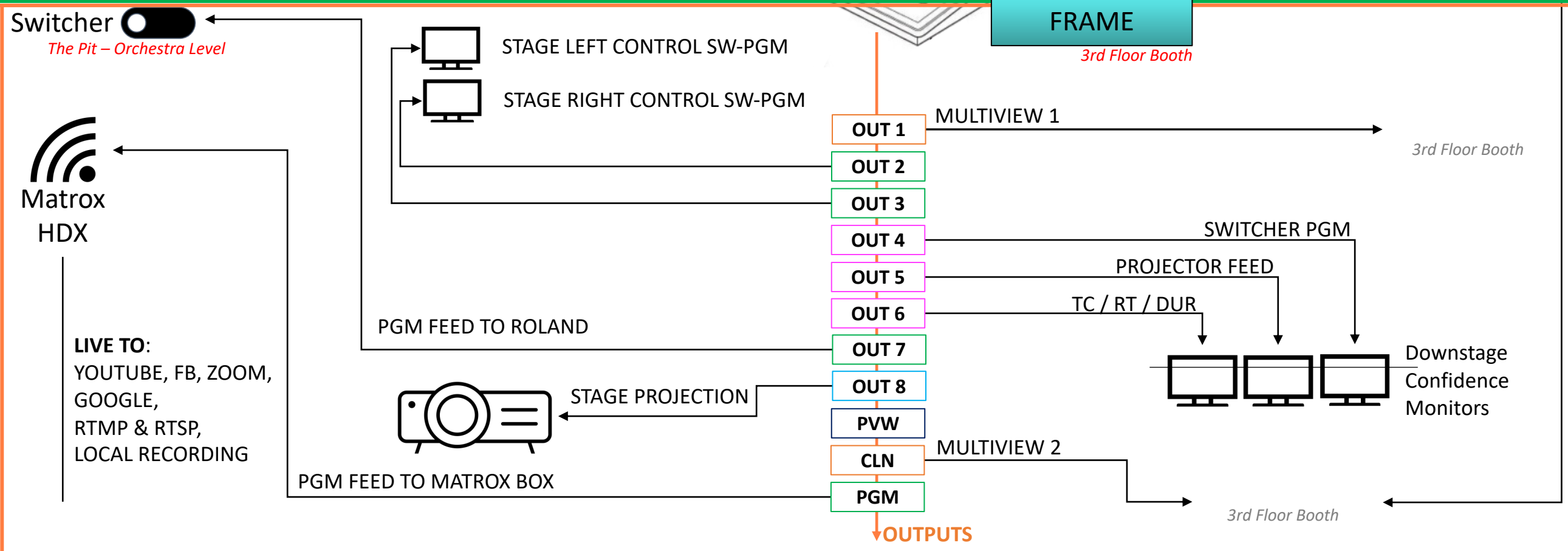
THE THEATER AT CITY TECH - VIDEO PLOT / 8 MULTI-CAM SWITCH

2/2

INPUTS



OUTPUTS



VOORHEES HALL

Contact Entertainment Technology directly
entertainmenttechnology@citytech.cuny.edu

NAMM HALL

- NAMM Cafeteria
- Quad on Tillary



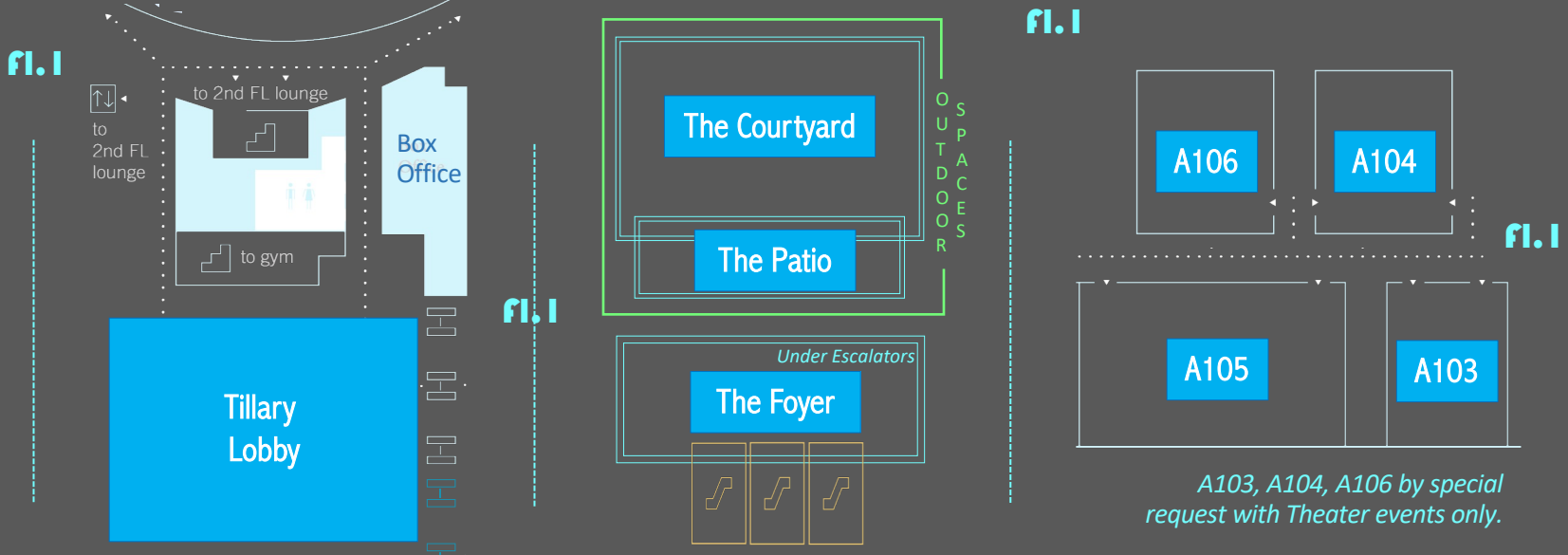
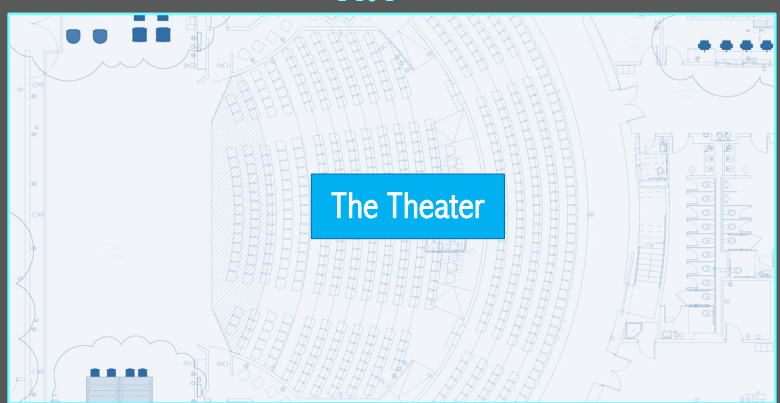
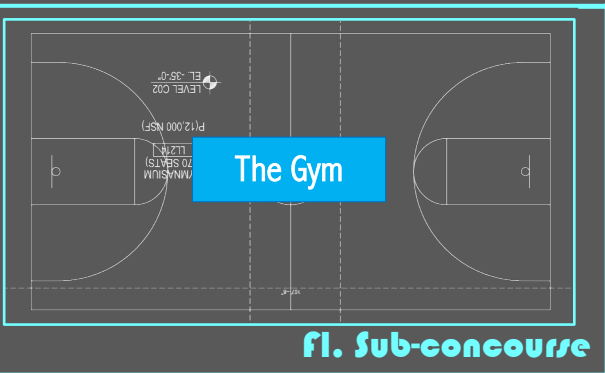
LIBRARY BUILDING

- L.1L 1st Floor Lobby
- L.G30 The Amphitheater
- L.632 Faculty Lounge
- L.GL G Floor Lobby

ALL OTHERS

Contact Room Scheduling directly
roomscheduling@citytech.cuny.edu

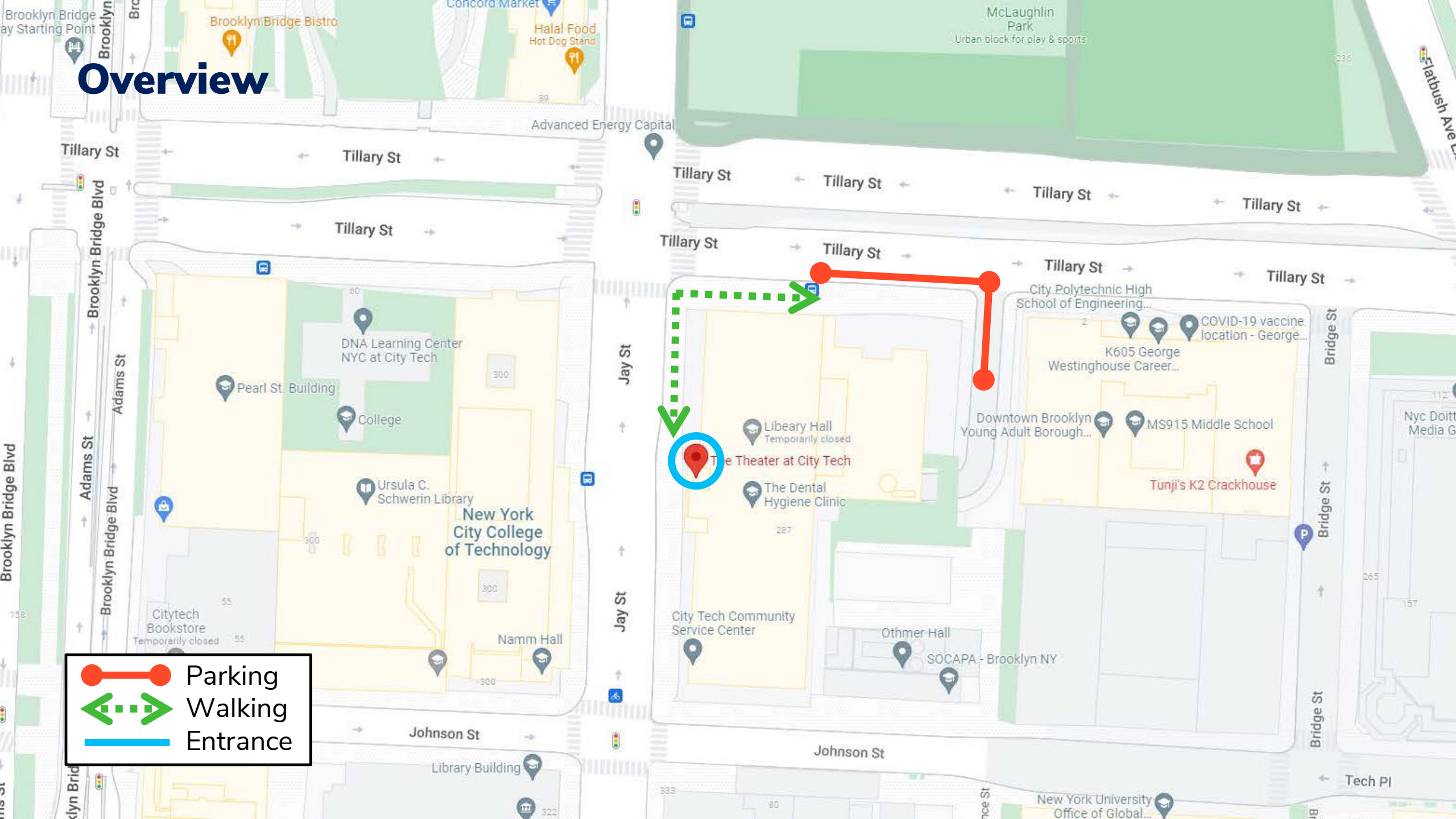
ACADEMIC BUILDING



A103, A104, A106 by special request with Theater events only.

fl. I

Overview

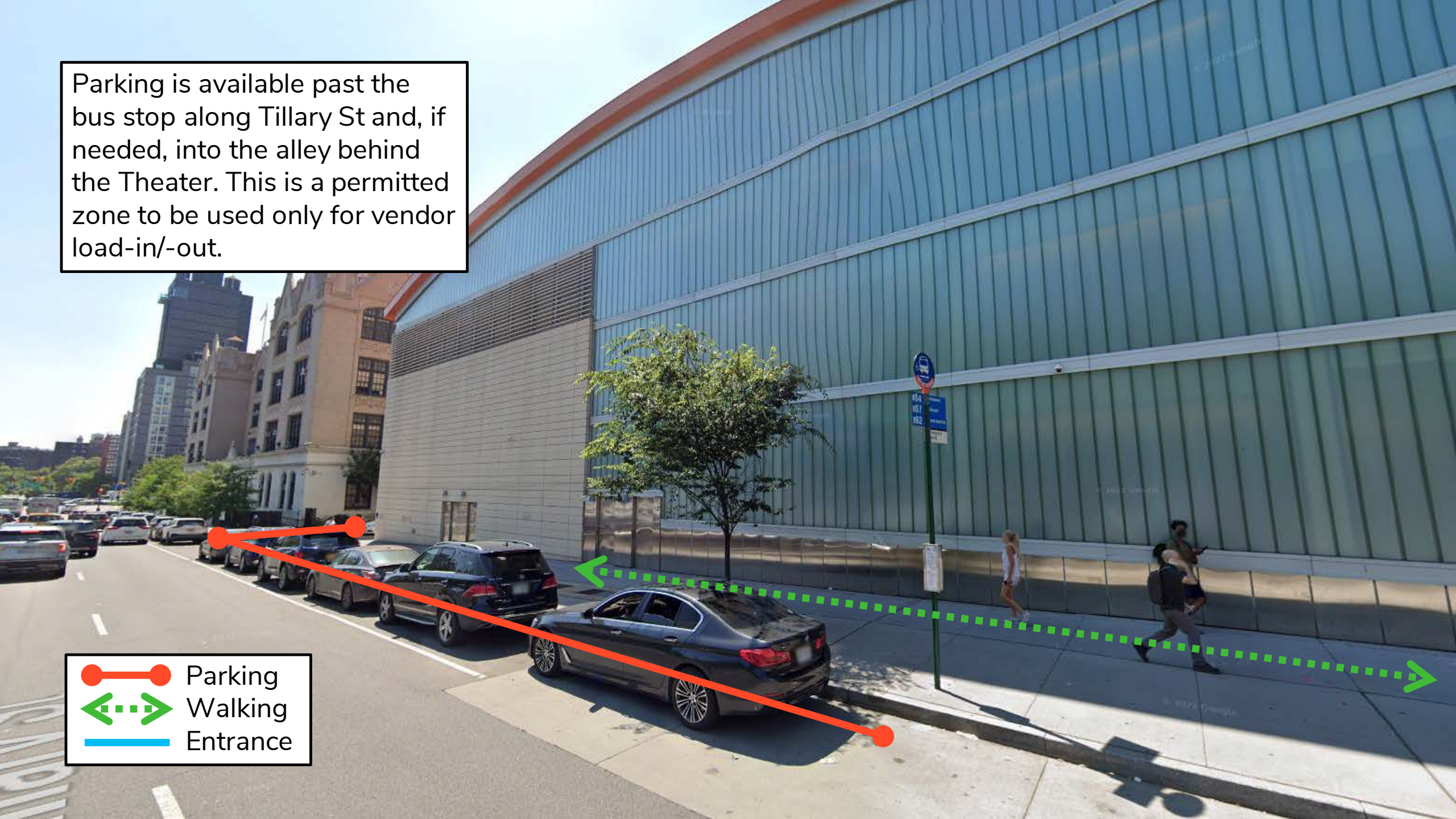


 Parking

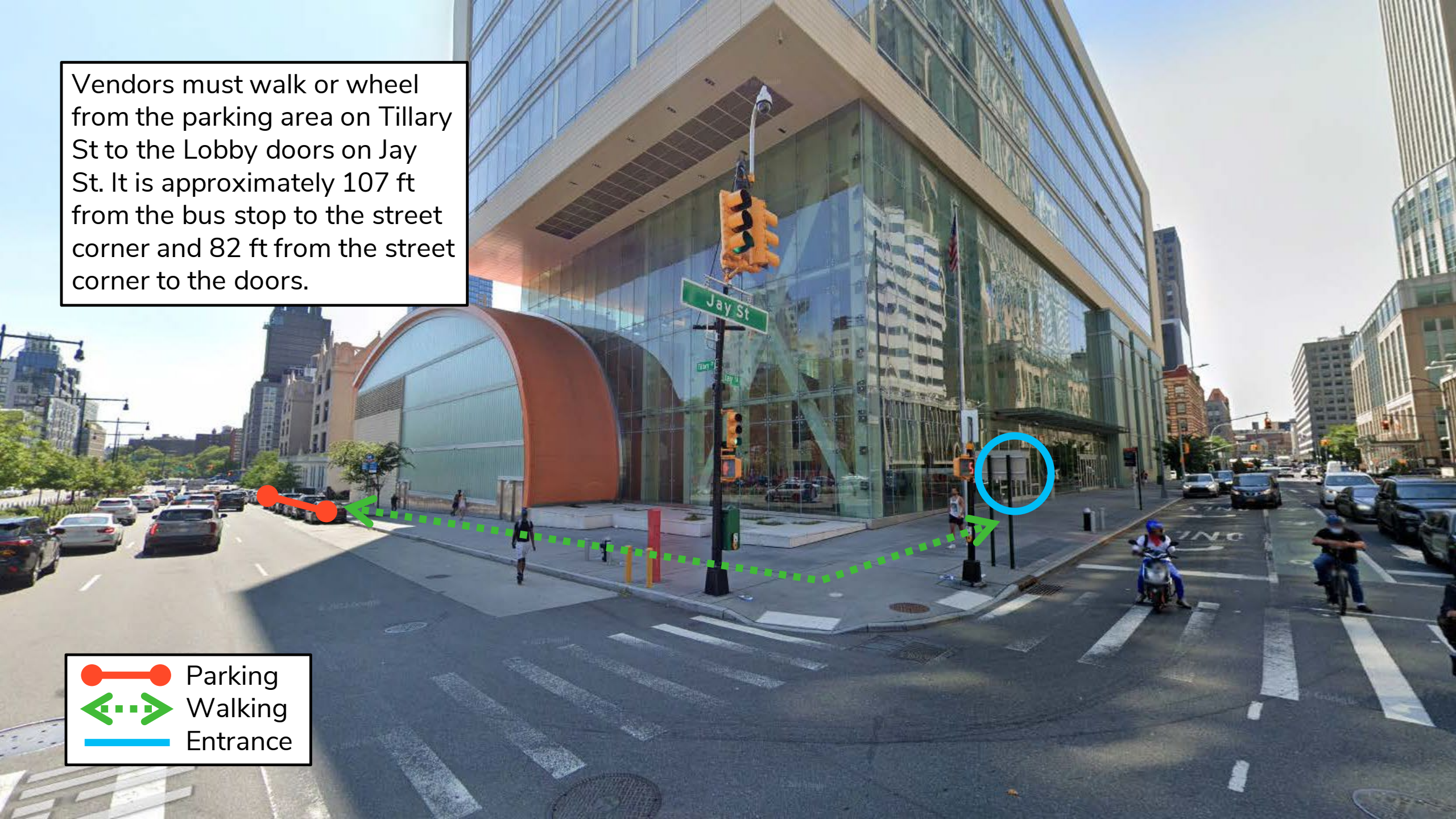
 Walking

 Entrance

Parking is available past the bus stop along Tillary St and, if needed, into the alley behind the Theater. This is a permitted zone to be used only for vendor load-in/-out.

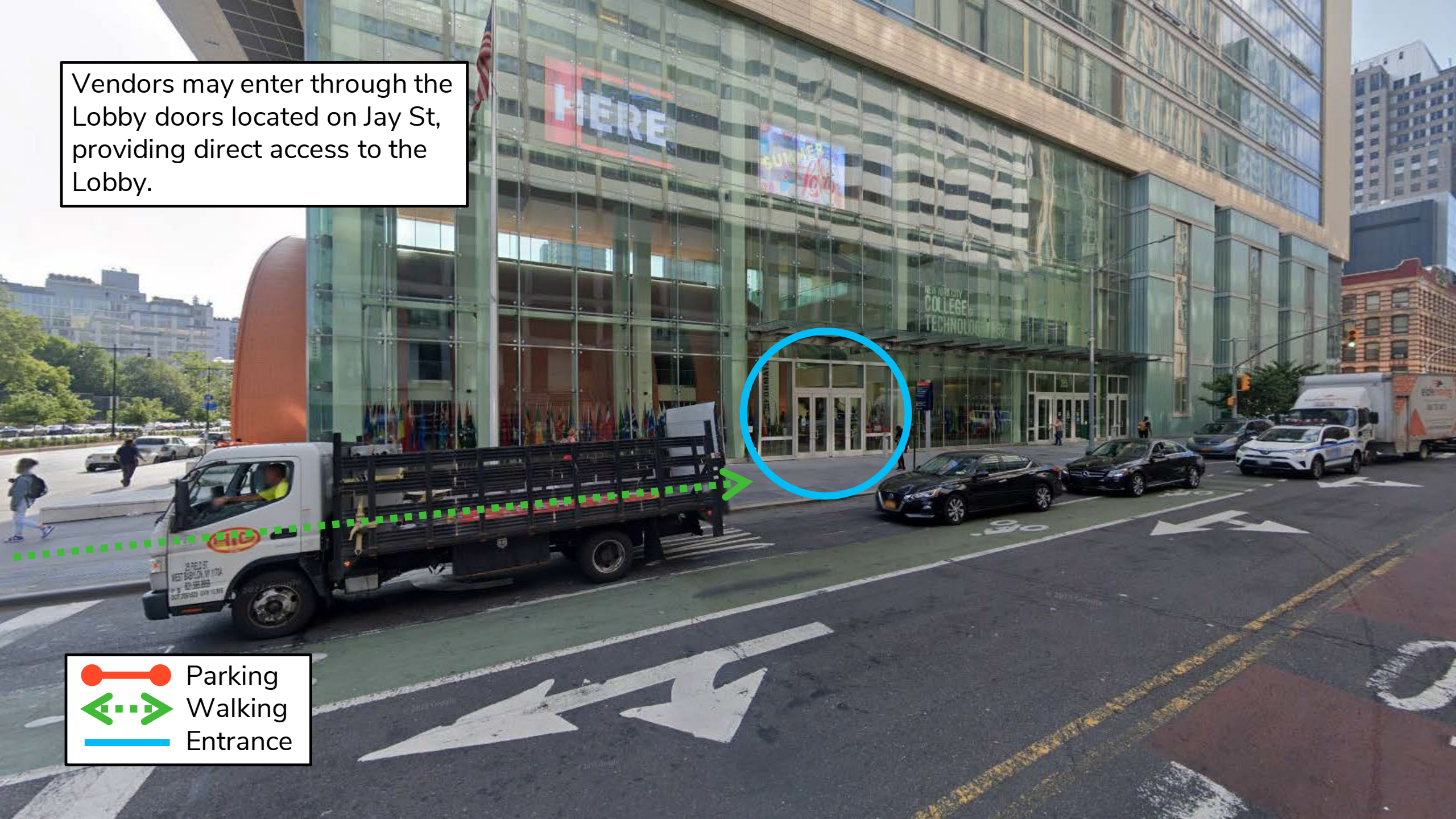


Vendors must walk or wheel from the parking area on Tillary St to the Lobby doors on Jay St. It is approximately 107 ft from the bus stop to the street corner and 82 ft from the street corner to the doors.



-  Parking
-  Walking
-  Entrance

Vendors may enter through the Lobby doors located on Jay St, providing direct access to the Lobby.



-  Parking
-  Walking
-  Entrance

Contact Information

Primary Contact: Catalin Zidaru
Director of Event Operations
(917) 567-7590
CZidaru@citytech.cuny.edu

Public Safety (718) 260-5555
Campus HQ
24/7

Public Safety (718) 260-5901
A-Bldg. Lobby
Regular Hrs.

